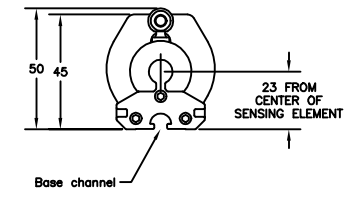
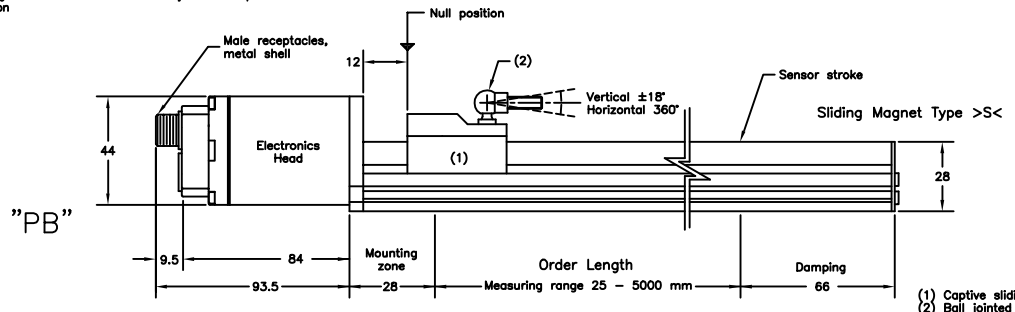
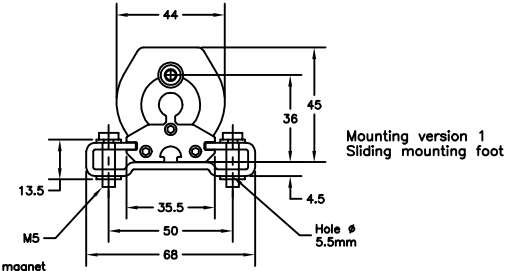
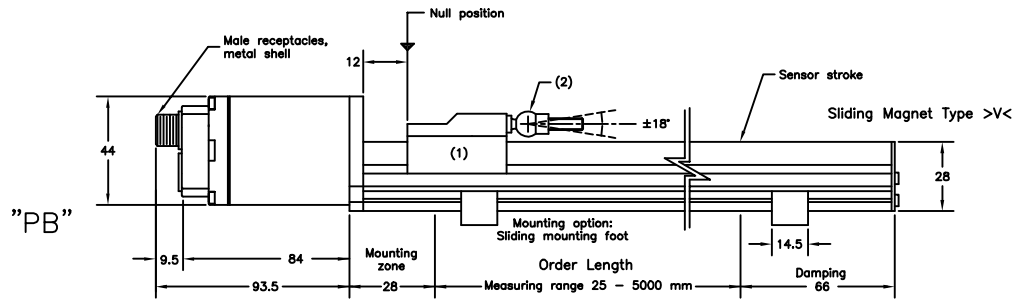


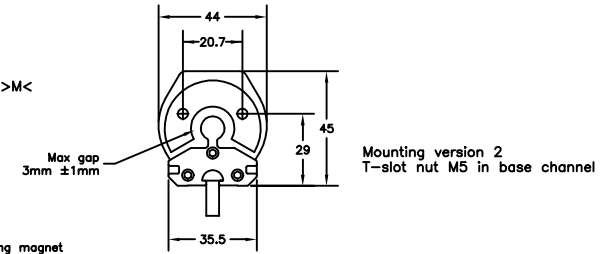
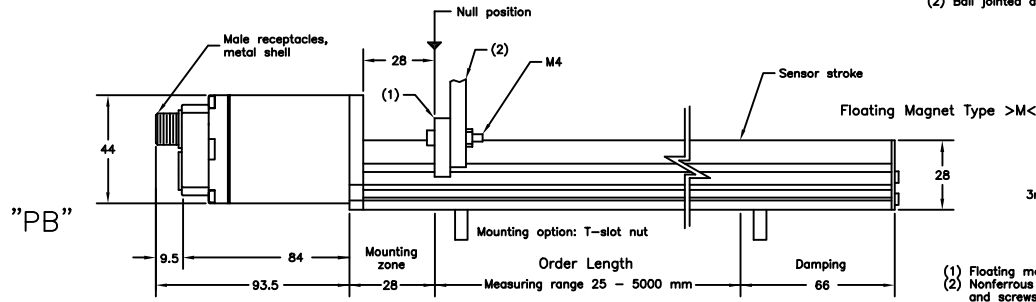
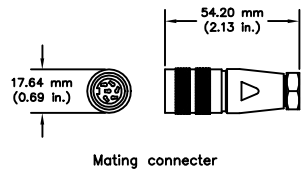
Temposonics® sensors are a registered trademark of MTS Systems Corporation
 © 1998 MTS Systems Corporation



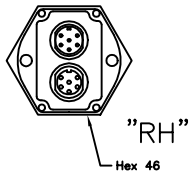
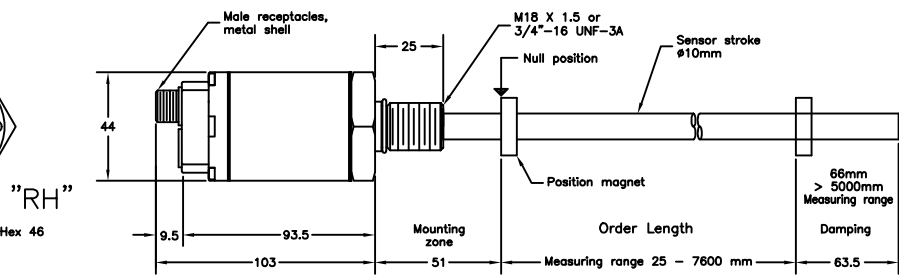
- (1) Captive sliding magnet
- (2) Ball jointed arm, M5 thread



- (1) Captive sliding magnet
- (2) Ball jointed arm, M5 thread



- (1) Floating magnet
- (2) Nonferrous support and screws



C	10/26/99	KLP	3919	CORRECT DIMENSIONS
B	8/26/99	KLP	3879	ADD DIMENSION FROM SENSING ELEMENT
A	8/17/99	KLP	3862	RELEASE TO PRODUCTION
REV.	DATE	BY	ECO #	DESCRIPTION
UNLESS OTHERWISE SPECIFIED:		MATERIAL: NA		
DIM = ± .01		FINISH		
DOK = ± .005		DRAWN: KLP		
ANGULAR = ± 1°		DATE: 8/17/99		
REMOVE BURRS AND SHARP EDGES .015 MAX		DOCUMENT OWNER		
DIM LIMITS HELD AFTER PLATING OR CONVERSION COATING		PRODUCT LINE: RH - PB		
DRILL DEPTHS ARE TO FULL DIAMETER		SCALE/DRAWING SIZE: 1:1 D		
TAP DEPTHS ARE MINIMUM FULL THREADS		SHEET 1 OF 1		
				<p>SYSTEMS CORPORATION SENSORS DIVISION RESEARCH TRIANGLE PARK, NORTH CAROLINA 27709</p> <p>TITLE: RH/PB PROFIBUS</p>
DO NOT SCALE DRAWING				DWG NO: 901027 REV: C