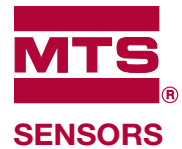


Temposonics®

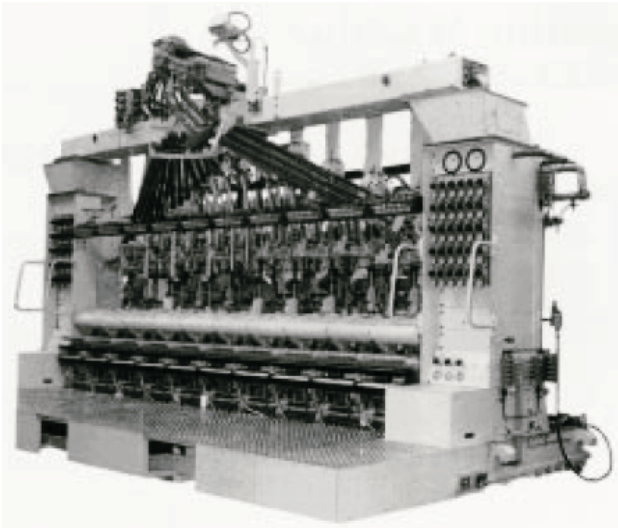
Magnetostrictive Linear-Position Sensors



Glass Presses

550855 B

Application Idea



MTS Temposonics displacement sensors are the favored method of position sensing in this application because of the need for high performance and continuous operation under demanding environmental operating conditions. As manufacturers and users continue to strive for better part quality, repeatability, and shorter cycle times, our sensors are chosen because of their high resolution and additional feedback variables like velocity.

Overview

Application:	Position feedback to control the amount of glass fed into the mold.
Benefits:	<ul style="list-style-type: none">• Superior response and accuracy mean higher machine performance and part quality.• Rugged, reliable construction results in reduced maintenance and downtime.• High shock and vibration tolerance and superior EMI and noise immunity ensure trouble free operation.• All of the above mean a lower overall sensor cost requirement over the life of the machine.
Sensors Used:	<ul style="list-style-type: none">• Temposonics GH and RH sensor models.

All specifications are subject to change. Please contact MTS for specifications that are critical to your needs.

Part Number: 08-05 550855 Revision B
MTS and Temposonics are registered trademarks of MTS Systems Corporation. All other trademarks are the property of their respective owners.
All Temposonics sensors are covered by US patent number 5,545,984.
Additional patents are pending.
Printed in USA. Copyright © 2005 MTS Systems Corporation. All Rights Reserved.

UNITED STATES
MTS Systems Corporation
Sensors Division
3001 Sheldon Drive
Cary, NC 27513
Tel: (800) 633-7609
Fax: (919) 677-0200
(800) 498-4442
www.mtssensors.com
sensorsinfo@mts.com

GERMANY
MTS Sensor Technologie
GmbH & Co. KG
Auf dem Schüffel 9
D - 58513 Lüdenscheid
Tel: +49 / 23 51 / 95 87-0
Fax: +49 / 23 51 / 56 491
www.mtssensor.de
info@mtssensor.de

JAPAN
MTS Sensors Technology
Corporation
Ushikubo Bldg.
737 Aihara-cho, Machida-shi
Tokyo 194-0211, Japan
Tel: +81 (42) 775 / 3838
Fax: +81 (42) 775 / 5512
www.mtssensor.co.jp
info@mtssensor.co.jp